

Richard Callner: Preliminary selection of Artworks for donation. February 15, 2021

Needlewatcher Arts Advisory: PO Box 233. Essex, New York. 12936-0233

All works represented below are lithographs. Drawn from Jewish mysticism, Richard Callner's celebrations of the myth of Lilith resonate with his sympathies with the Women's Movement of the late Twentieth Century. Created at the same time as Adam, Lilith refused to submit to male authority and leaves Eden. When Eve is created from Adam's rib, Lilith returns to the garden to share with her half-sister the knowledge of good and evil. Demonized by Judeo-Christian tradition, the persona of Lilith resonates with Pagan deities such as Ishtar, Astarte as embodiments of feminine power and sexual independence. These photographs were created solely for identification purposes. We are in the process of creating new high-resolution photos suitable for publication, and will make them available to interested parties. For more information go to: <https://www.needlewatcher.com/richard-callner-legacy-advancement-project/>, or email: Legacy@needlewatcher.com



Dreams of Lilith I. Lithograph. 1968. 29 ½ x 21



Dreams of Lilith II. Lithograph. 1968. 29 ½ x 21



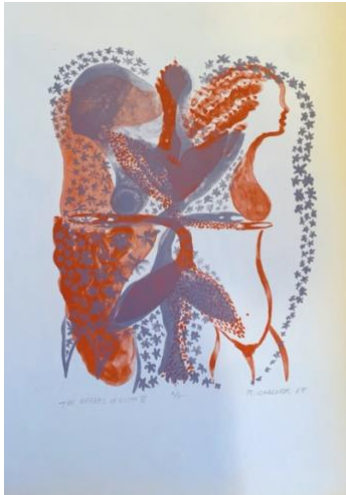
Dreams of Lilith III. Lithograph. 32 x 27. 1968



Dreams of Lilith IV. Lithograph. 1968. 29 1/2 x 21 3/4



Dreams of Lilith V. Lithograph. 1968. 29 1/2 x 21



Dreams of Lilith. VII. Lithograph. 1968. 29 ½ x 21



Dreams of Lilith VIII. Lithograph. 1968. 29 ½ x 20



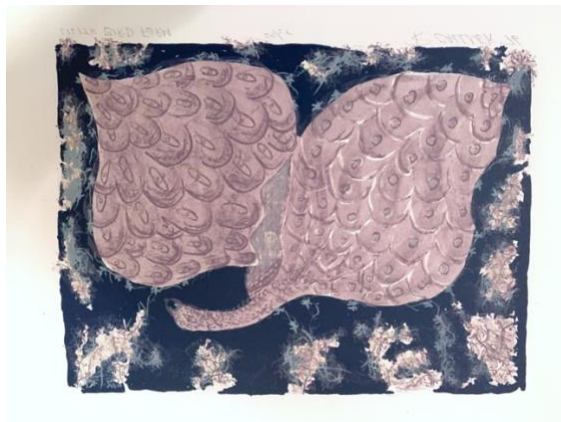
Torri II. 1967. Lithograph. 29 ½ x 21.



Diana of Ephesus as Venus. Lithograph. 1968. 25 x 17 ¾



Lilith Bird. Lithograph. 1976. 22 x 16



Lilith Bird Form. Lithograph. 22 x 30.